

Henderson Street

by Jill Shaulis

ROBERT KAUFMAN
F A B R I C S

Kindred
Yellow Creek
Quilt Designs
Spirits



This is Jill's third line with Robert Kaufman Fabrics. It's called Henderson Street. It contains a variety of colors to create beautiful scrappy projects or color groupings for planned projects. The patterns can be purchased from Jill at Yellow Creek Quilt Designs.



Kindred

Jill is a fabric and pattern designer. She and her husband Dave currently own and operate the store Yellow Creek Quilt Designs (YCQD), located in Pearl City, IL. Creating and sewing have been a part of Jill's life since she was very small. Her mom taught her to sew clothing and they took their first quilting class together in the late 1980s. Jill is a mom to three grown children and grandma to six precious little ones. Jill and Dave live in Northwestern Illinois. Jill taught physical education for several years prior to opening a quilt/gift shop with her sister Vicki. From that humble opening in 1992 many ideas have flourished and grown. The pattern company, YCQD, home of Kindred Spirits Pattern Series launched and has grown to be a well-respected and trusted pattern company in the quilting industry. Jill lectures and teaches around the country. She has also been a featured designer in several books by Martingale and has many patterns published in Primitive Quilts and Projects. She looks forward to the release of a new book with Martingale in the Fall of 2021. When she has any spare time it's spent with family, running or biking.

Spirits



Let's start at the beginning. Family, friends and neighbors, as you know, are a large part of who I am. By the time I was four years old, ironically, my family had moved four times. Although I was too young to remember, my first home was located on Henderson Street. Not long after we moved. First to Nursery Street, then Rudy's Farm, then American Street, and finally Main Street in Pearl City where my quilt shop is located today. At the time, each move created more love and determination for a blended family of six children. The name of this fabric line and the coordinating patterns is an interpretation of my life growing up from Henderson Street to Main Street and all stops in between.

Diamonds for Emily Jane

36" X 55"

By Jill Shaulis

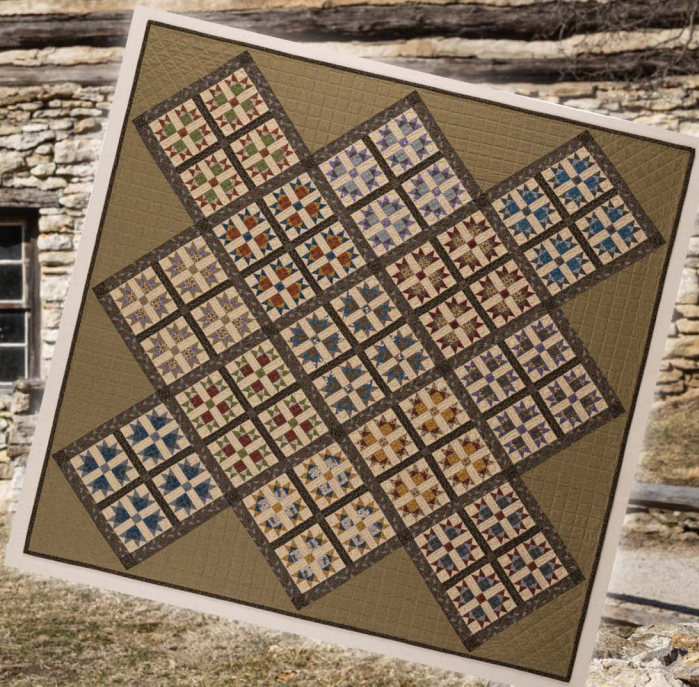
This quilt block and overall design has a double meaning for me. Emily Jane, my youngest grandchild (just a few months old) was named in part to honor my mother Edna Jane. It also fittingly represents my family's second move to Nursery Street.



Rudy's Farm

63"X 63"

By Jill Shaulis



A country home with a large hill to the big barn was a common site on most farms in our area. Most of the year the hill was a chore for us younger kits to climb but in the winter it was the perfect spot for family sledding and the occasional snowball fight. The snowflakes in this quilt are reminiscent of those fun snowy days residing at Rudy's Farm.

Baskets With Becky

49" X 61"

By Jill Shaulis

We stayed at American Street for only a short time but in my mind American means not only freedom and family but friends and friendship. Whether it's childhood friends or adult 'quilty' friends I am thankful for all of those folks but especially those that were involved in making this design become a reality. Especially Becky who contributed so much.



Main Street

18 1/2 X 23"

By Jill Shaulis

With my grandparents support and encouragement our parents packed up and settled our large family in a more spacious home on Main Street. Although the house required a little love and some renovation it was located in an area with quality schools, an essential requirement for my parents. But more importantly to me the neighborhood was filled with other growing families where I was able to form the many lifelong friendships I still treasure today. As you might imagine, it was a sentimental time for me when many years later my parents decided to downsize and sell the property. The house on Main Street was truly home to me for over twenty years and where I made my most wonderful and lasting childhood memories.



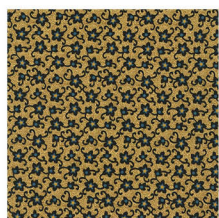
Friends from the Prairie

54" X 66"

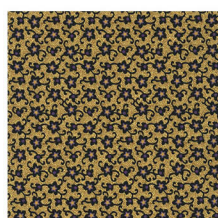
By Julie Letvin

Jill and I became acquainted while we were both vending at various quilt shows, where she invited me to come to a quilt retreat with her and other like-minded friends. It was SO MUCH FUN!! This gorgeous retreat lodge is on a beautiful piece of land on the prairie. Now we go just as often as we can, and through those retreats we have become great friends. To honor Jill and the Henderson Street line, I chose to use the friendship star quilt block, and named this quilt "Friends from the Prairie".

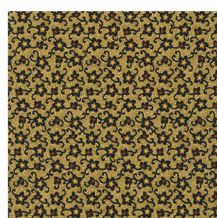




AZU-20517-4



AZU-20517-6



AZU-20517-133



AZU-20518-6



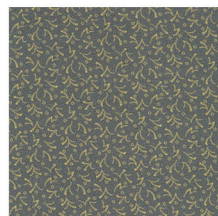
AZU-20518-7



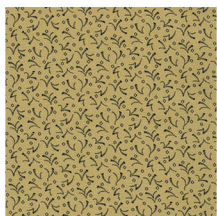
AZU-20518-9



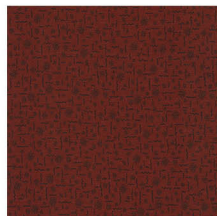
AZU-20516-6



AZU-20516-12



AZU-20516-13



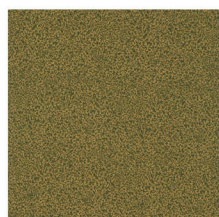
AZU-20519-3



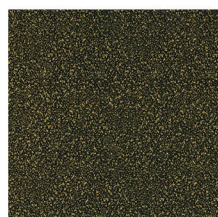
AZU-20519-2



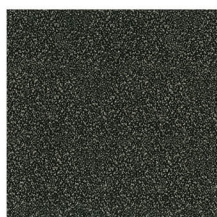
AZU-20519-14



AZU-19514-7



AZU-20514-2



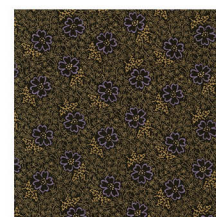
AZU-20514-12



AZU-20513-12



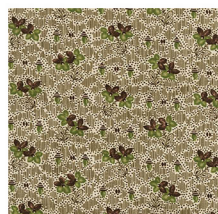
AZU-20513-2



AZU-20513-6



AZU-20512-4



AZU-20512-7



AZU-20512-180



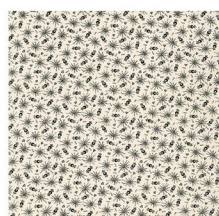
AZU-20512-16



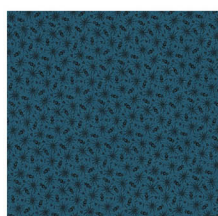
AZU-20515-15



AZU-20515-12



AZU-20520-15



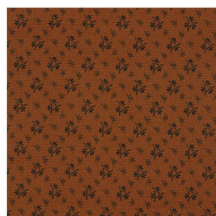
AZU-20520-4



AZU-20520-3



AZU-20520-133



AZU-20515-180

29 skus-ships August 2021

All patterns shown are available for purchase
by contacting Yellow Creek Quilt Designs

To order fabrics contact:

ROBERT KAUFMAN
F A B R I C S

www.robertkaufman.com
(800) 877-2066



www.yellowcreekquilt designs.com
yellowcreekquilt designs@gmail.com
(815) 443-2211.