

STONE BRIDGE

Jill Shaulis

Kindred
Yellow Creek
Quilt Designs
Spirits

ROBERIKAUFGMAN
F A B R I C S

photos by: Aaron Leimkuehler
allevelsphoto@gmail.com



This is Jill's fifth line with Robert Kaufman Fabrics. It's called Stone Bridge. It contains a variety of colors to create beautiful scrappy projects. The patterns can be purchased from Jill at Yellow Creek Quilt Designs.

Jill is a fabric and pattern designer. She and her husband Dave currently own and operate the store Yellow Creek Quilt Designs (YCQD) located in Pearl City, IL. Creating and sewing have been a part of Jill's life since she was very small. Her mom taught her to sew clothing and they took their first quilting class together in the late 1980's. Jill is a mom to three grown children and grandma to seven precious little ones. Jill and Dave live in Northwestern Illinois. Jill taught physical education for several years prior to opening a quilt/gift shop with her sister Vicki. From that humble opening in 1992 many ideas have flourished and grown. The pattern company YCQD launched and has grown to be a well-respected and trusted pattern company in the quilting industry. Jill lectures and teaches around the country. She has also been a featured designer in several books by Martingale and has many patterns published in Primitive Quilts and Projects. She had a new book released last summer. When she has any spare time it's spent with family, friends, swimming or biking.



My latest fabric collection, Stone Bridge, has true personal meaning to my husband, Dave, and me. Stone Bridge Road in northwest Illinois is where the Shaulis family lived, worked and farmed for many years. My brother-in-law Dan, the youngest of three children, beat cancer twice as a young man but lost the battle with COVID-19 in 2022. This fabric line is dedicated to Dan's life and legacy.

Red Brick House

(17" X 20 3/4") By Jill Shaulis

Quilted by Dan Kolbe



The Shaulis family farm on Stone Bridge Road was known locally as the "red brick house by the railroad tracks" and where Dan was born. After the children, Dave, Dianne and Dan moved away and their parents passed on, the red brick house sat empty for some time and became run down and in poor condition. Family members agreed that the home be demolished, and as Dan was a volunteer for the local fire department, he suggested the house be used as a training exercise. The home is gone now but the barn and some outbuildings still stand in fond memory.



Hunter's Ridge

(34 1/2" X 34 1/2") By Jill Shaulis

Quilted by Dan Kolbe

Dan was an avid sportsman who loved hunting deer, prairie dogs, and bear. He also had the time, talent and equipment to reload his own ammo and participate in shooting trap and target practice. He was a kind, friendly guy always willing to educate others about guns, gun safety and share stories of his hunting experiences.



Dan's Journey

(31" X 31") By Jill Shaulis

Quilted by Dan Kolbe

Dan's memory continues to live on in the hearts and minds of those who knew him. He was happiest spending time with family, friends and enjoying the activities and hobbies he loved.



Sparky is Home

(47 1/2" X 60") By Jill Shaulis

Quilted by Alexia Rosfelder

Dan was a master electrician or "Sparky" by trade. He was well respected by his friends and colleagues in the profession. A bit of a daredevil and often working with high voltage, he was always willing to climb in the telescoping utility bucket and get aerial!



Firefighter #402

(49 1/2" X 63") By Jill Shaulis

Quilted by Alexia Rosfelder



Dan was well known and respected in our small community due to his active participation and involvement in many activities. His training as volunteer firefighter meant he learned to be meticulous about safety and neatness at the firehouse and on any emergency call. Reliable. Dependable. That was Dan.





AZUD-22148-6



AZUD-22148-9



AZUD-22148-15



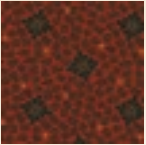
AZUD-22148-133



AZUD-22149-15



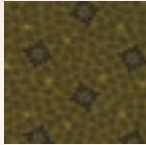
AZUD-22149-133



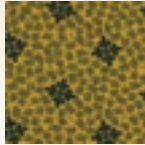
AZUD-22150-3



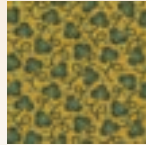
AZUD-22150-13



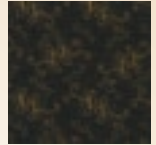
AZUD-22150-14



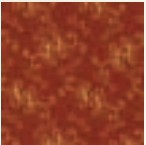
AZUD-22150-133



AZUD-22151-9



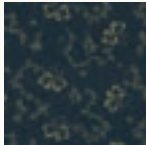
AZUD-22152-2



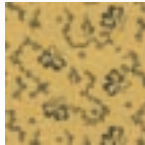
AZUD-22152-3



AZUD-22152-7



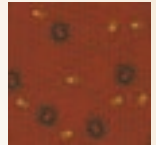
AZUD-22153-9



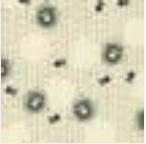
AZUD-22153-13



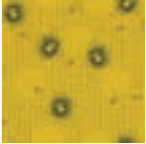
AZUD-22153-180



AZUD-22154-7



AZUD-22154-15



AZUD-22154-133



AZUD-22155-6



AZUD-22155-13



AZUD-22156-2



AZUD-22156-7

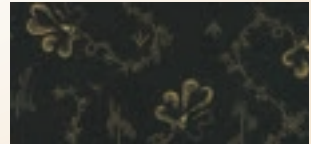
WIDE BACKS



AZUDX-22157-7



AZUDX-22157-180



AZUDX-22158-2

Ships October 2023

All patterns shown are available for purchase by contacting Yellow Creek Quilt Designs

To order fabrics contact:

ROBERTKAUFMAN
F A B R I C S

www.robertkaufman.com
(800) 877-2066

Kindred
Yellow Creek
Quilt Designs
Spirits

www.yellowcreekquilt.com
yellowcreekquilt@gmail.com
(815) 443-2211